



**PARTICLE  
MEASURING  
SYSTEMS®**

a spectris company

*Without measurement there is no control*

---

# MiniCapt® Mobile Microbial Air Sampler

*Configurations & Spare Parts  
with Part Numbers*





**MiniCapt Mobile Microbial Air Sampler**  
*models and part numbers:*

<b>25 LPM</b>	PN 790045-0025
<b>50 LPM</b>	PN 790045-0050
<b>100 LPM</b>	PN 790045-0100
<b>EL</b>	PN 790044-0100
<b>MCM with head for 6-9mm plates</b> (100 LPM only)	PN 790045-0101

*The Anti Microbial Housing MCM is in effect as of January 26, 2021*

## Head Impactor Models



Additional Impactor head SS 316L  
with 20 precision-cut slides:  
*models and part numbers:*

**25/50 LPM** PN 1000019036

**100 LPM** PN 1000019035

For use with 6-9 mm high agar plates

**25/50 LPM** PN 1000023229

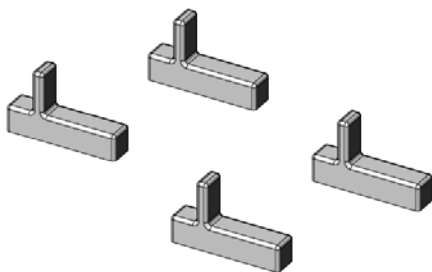
**100 LPM** PN 1000023228

## Adaptor for Rapid Micro Biosystems Plates



This adaptor has been created **ONLY** for customer which implemented or are going to implement RMB Direct Growth solution and they have or want to buy our MCM or Biocapt

**25/50 LPM** PN 1000025765

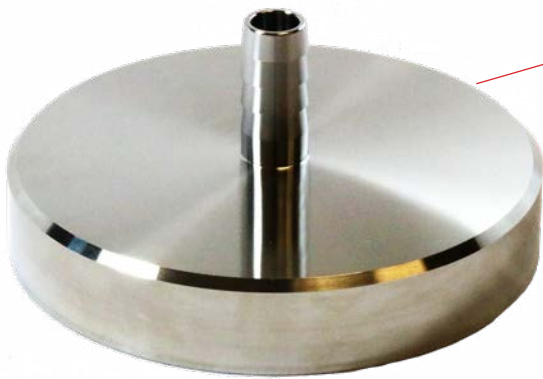


## Remote Sampling



1

Remove the impactor head



2

Replace the impactor head with the remote sampling top.

**25/50 LPM**    PN 1000021673

**100 LPM**    PN 1000021905



PN 90790048

## Spare Components for the 100 LPM Remote Sampling Assembly



**100 LPM 3/4" Silicone Tubing** PN 1000027230

**100 LPM** PN 1000021905

## Adjustable Head



hose barb



mushroom

### 25/50 LPM

Four configurations are available:

- hose barb PN 790018-0000
- 3/4" hose barb PN 790018-0005
- lateral 3/4" TC PN 790018-0010
- mushroom 3/4" TC PN 790018-0020

*(see config sheet)*

### 100 LPM

Three configurations are available:

- hose barb PN 790018-0105
- lateral 3/4" TC PN 790018-0110
- mushroom 3/4" TC PN 790018-0120

*(see config sheet)*

## Other Lightweight BioCapt Stainless Steel Atrium – Non-Adjustable



hose barb



mushroom



side mount

### 25/50 LPM

Three configurations are available:

- side barb PN 790017-0010
- side mount PN 790017-0000
- mushroom PN 790017-0020

### 100 LPM

Three configurations are available:

- side barb PN 790017-0210
- side mount PN 790017-0200
- mushroom PN 790017-0220



### Spare BioCapt Light Weight head Top

PN 1000014957 25/50 LPM

PN 1000025674 100 LPM



**Pin Set #0** PN 1000014968 86.7 D x 3.8 H mm (installed in each unit)

**Pin Set #1** PN 1000014958 87.5 D x 3.8 H mm

**Pin Set #2** PN 1000014959 87.5 D x 5.3 H mm (supplied each unit)

**Pin Set #3** PN 1000014960 88.7 D x 4.8 H mm

**Pin Set #4** PN 1000014961 88.7 D x 3.8 H mm

**Pin Set #5** PN 1000014962 88.6 D x 3.8 H mm

**Pin Set #6** PN 1000014963 87.1 D x 5.2 H mm

**Pin Set #7** PN 1000014964 87.1 D x 5.0 H mm

**Pin Set #8** PN 1000014965 88.7 D x 5.5 H mm (supplied each unit)

**Pin Set #9** PN 1000014966 88.1 D x 5.8 H mm

**Pin Set #10** PN 1000014967 88.1 D x 4.0 H mm

**Pin Set #12** PN 1000015744 91.4 D x 6.0 H mm



### Black O-Ring

PN 1000020612

## BioCapt SS Head Remote



**3/4" Tri-Clamp Fitting, Mushroom Outlet**  
PN 790018-0020

**3/4" Tri-Clamp Clamp**  
PN 90790058



**3/4" Tri-Clamp PTFE Gasket**  
PN 90790059





## BioCapt Single-Use Mushroom Cap Adaptor



PN 90790063



## Remote Sampling Using the BioCapt Single-Use Microbial Impactor

The remote head of the BioCapt Single-Use must be connected to the air sampler/MiniCapt mobile sampler at 25-50 LPM.

*For the BCSU 100 please refer to the configuration sheet on page 11.*

**BCSU-TSA** PN 79001201

**BCSU-TSA w/ Neutralizers** PN 79001209

**BCSU-TSA w/Neutralizer and Lactamator**  
PN 79001409

**BCSU-SDA** PN 79001409

**BCSU-100 LPM** PN 7900240921



*(see available agar types on the Configuration Sheet)*



**Mushroom adaptor** PN 90790063

**Flat bracket lid** PN 90790048

**Tri Clam** PN 90790058

**Gasket** PN 90790059



*\*This kit can only be used with BCSU 25/50LPM.*

*For the BCSU 100 please refer to the configuration sheet on page 11.*

MiniCapt Mobile Remote Sampling using BioCapt Single-Use Microbial Impactor 25-50 lpm:  
Need one complete set of connection items



**Alternative 1**  
Remote sampling with BCSU flat adaptor

**MiniCapt 25/50 LPM**

KIT	PN 90790053
lid	PN 1000021673
1/2" hose	PN 1000027229
adaptor	PN 90790062
gasket	PN 90790059
tri-clamp	PN 90790058
barb	PN 90790056



**Alternative 2**  
Remote sampling without adaptor

**MiniCapt 25/50 LPM**

hose	PN 1000021274
lid	PN 1000021673

*NOTE: for BCSU 100 PN 7900240921 please refer to the configuration on page 11.*

How to connect BCSU 100 LPM to MCM or MCR



**Remote Lid 25/50 LPM**  
PN 10021673  
**25 LPM Tubing**  
PN 100021274  
Or  
**50 LPM Tubing**  
PN 1000027229  
**100 LPM BCSU**  
PN 7900240921



**Remote Flat Lid** PN 90790048  
**100 LPM Tubing** PN 1000027230  
**(2) 3/4" Barb** PN 90790057  
**Flat Adaptor** PN 90790062  
**(2) Gasket** PN 90790059  
**(2) Tri-Clamp** PN 90790058  
**100 LPM BCSU** PN 7900240921

*NOTE: the tubing length can not exceed 1 meter.*



**Remote Lid 100 LPM**  
PN 100021905  
**100 LPM Tubing** PN 100027230  
**3/4" Barb** PN 90790057  
**Flat Adaptor** PN 90790062  
**Gasket** PN 90790059  
**Tri-Clamp** PN 90790058  
**100 LPM BCSU** PN 7900240921



**Remote Lid 100 LPM**  
PN 100021905  
**100 LPM Tubing** PN 1000027230  
**3/4" Barb** PN 90790057  
**Flat Adaptor** PN 90790062  
**Gasket** PN 90790059  
**Tri-Clamp** PN 90790058  
**BCSU Mushroom Adaptor**  
PN 90790063  
**100 LPM BCSU** PN 7900240921

## BioCapt® Single-Use: Alternative 1



**BCSU Flat Adaptor** PN 90790062



**Elbow Adaptor** PN 90790060

**KIT**

PN 90790060

BCSU flat adaptor	PN 90790062
3/4" tri-clamp	PN 90790058
3/4" tri-clamp gasket	PN 90790059
elbow	PN 100022100

## Compressed Gas Kit



**50 LPM**      PN 90790050  
**100 LPM**     PN 90790051  
**25 LPM**      PN 90790052

**CG Tubing**      1000021187  
*Sold by the foot*

Compressed Gas Filter Exhaust (Zero Filter)  
**Clean, not sterile**      PN FL37



Compressed Gas Kit - PN 90790050 / 51 / 52



1

Remove the sampler head



2

Mate dual impactor to CG head



3

Install dish

Dual Connection BioCapt Impactor  
**(spare) 25/50 LPM** PN 1000021247

**(spare) 100 LPM** PN 1000021248

For use with 6-9 mm high agar plates

**25/50 LPM** PN 1000023227

**100 LPM** PN 1000023552

Gas line inlet



4

Mate impactor/CG assembly to unit

**Compressed Gas Filter exhaust**

*(Zero Filter):* PN FL37

**Gamma irradiated** PN 1000021454

**Tubing** PN 1000021187

ISP Kit



<b>25 LPM</b>	PN 90790045
<b>50 LPM</b>	PN 90790046
<b>100 LPM</b>	PN 90790047



ISP Kit Components: 25, 50, or 100 LPM



**25/50 LPM 1/2" Silicone Tubing** PN 1000027229  
**100 LPM 3/4" Silicone Tubing** PN 1000027230



Dual Connection BioCapt Impactor  
**25/50 LPM** PN 1000021247  
**100 LPM** PN 1000021248

**ISP unit (spare) 25 LPM** PN 1000021180  
**ISP unit (spare) 50 LPM** PN 1000021181  
**ISP unit (spare) 100 LPM** PN 1000021182

## Components for Isolator



**Isolator Stand 25/50 LPM** PN 90790043

**Isolator Stand 100 LPM** PN 90790044

Connecting the 25, 50, or 100 LPM Unit



**3/4" Tri-Clamp PTFE Gasket** PN 90790059



**3/4" Tri-Clamp Clamp** PN 90790058

**25/50 LPM 1/2" Barb Fitting to 3/4" Tri-Clamp Fitting**  
PN 90790056

**100 LPM 3/4" Barb Fitting to 3/4" Tri-Clamp Fitting**  
PN 90790057



**25/50 LPM 1/2" Silicone Tubing**  
PN 1000027229

**100 LPM 3/4" Silicone Tubing**  
PN 1000027230

## Optional Parts



**O-Ring**

PN 1000021241



**Exhaust Port**

PN 1000019071



**Cover Plate**

PN 1000019051

Alternative but not autoclavable tubing

**25/50 LPM 1/2" Polyurethane Transparent Tubing**

PN 1000009341

**100 LPM 3/4" polyurethane Transparent Tubing**

PN 1000012960



**Battery**  
PN 1000019006



**Power Supply**  
PN 1000019008



**Power Cord**  
*N. America, Taiwan, Phillipines*  
PN CD02



**Power Cord**  
*China*  
PN 1000017377



**Power Cord** *Japan*  
PN 1000021015



**Power Cord** *UK*  
PN 1000025352



**Power Cord** *Euro*  
PN 1000016963



**Carrying Case**

PN 1000021319



**Minicapt, Printer Refurbished**

PN 1000025555

(only printer refurbished)

**Minicapt, Printer Kit, Refurbished**

PN 90790070

(included: printer refurbished, USB cable,  
Power cable)



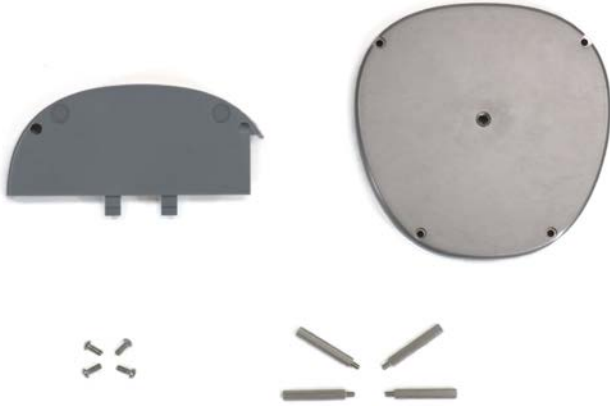
**Paper**

PN 1000000975



**Barcode Reader**

PN 90790071



**MiniCapt Mobile Mounting Base**  
PN 90790072



**Tripod** PN MI008 MI



## MiniCapt Mobile Operations Manual



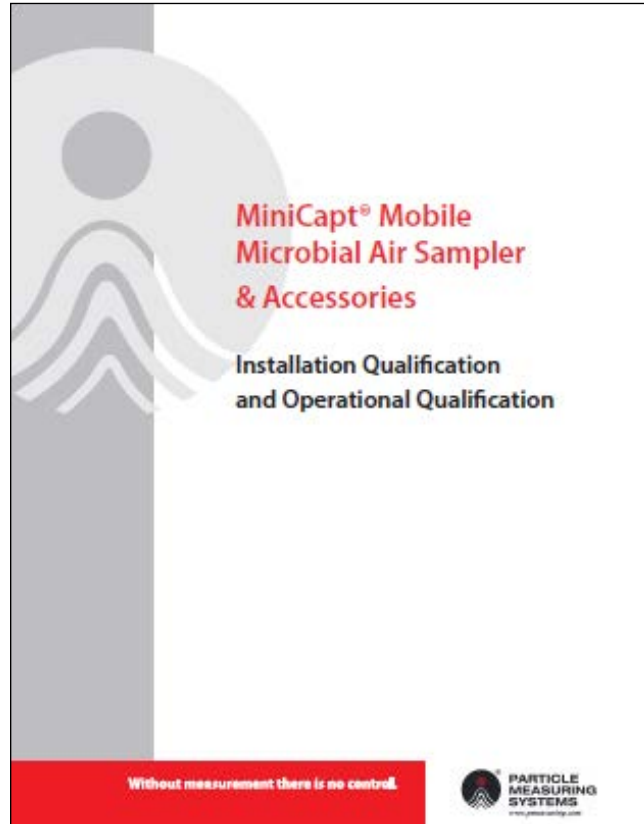
PN 1000020872

*Includes instructions for the Compressed Gas Kit*

MiniCapt Mobile SOP Template **PN 1000026881**



## MiniCapt IQOQ



Product		Part No.	1 Order	2 or more orders
MiniCapt Mobile IQOQ Validation Protocol	MNL, MiniCapt Mobile and Accessories, IQOQ, Security Paper KK15A2VBL	1000021474	x	
		1000024271		X Authorized Copy
MiniCapt EL IQOQ Validation Protocol	MNL, IQOQ, MiniCapt EL, Security Paper KK15A2VBL	1000024597	x	
		1000024272		X Authorized Copy
BCSU Validation Binder	MNL, Validation Manual, BioCapt Single Use, Security Paper KK15A2VBL	90790064	x	

**For pricing refer to your local list price**

*Includes information on accessories and kits*